

CDFW West Sacramento Facility Location, Parking, Access & Conference Rooms

1010 Riverside Parkway, West Sacramento, CA 95605

Table of Contents

CDFW West Sacramento Facility Location, Parking & Access	1
Building Location	2
Employee Parking.....	5
General Parking	5
Electric Vehicle (EV) Charging Stations	5
Building Access	5
Visitor Access (non-CDFW)	5
CDFW Visitor Access.....	5
Visitor Parking & Electric Vehicle Charging Stations.....	6
Conference Room Locations	7

Table of Figures:

Figure 1: General Building Location of 1010 Riverside Parkway.....	2
Figure 2: View of the frontage sign of the CDFW West Sacramento facility in the industrial business park.....	3
Figure 3: Closeup view of the location of the CDFW West Sacramento facility in the industrial business park.....	4
Figure 4: Diagram showing parking locations and charging stations for 1010 Riverside Parkway and 980 Riverside Parkway.....	6
Figure 5: Conference Room Locations in 1010 Riverside Parkway.	7

Building Location

The CDFW West Sacramento Facility is in the back southwest corner of the large industrial complex located off of Interstate 80. From Reed Avenue, turn left on to Stillwater Road. Turn right on to Riverside Parkway. Take the 2nd left off Riverside Parkway to 1010 Riverside Parkway.



Figure 1: General Building Location of 1010 Riverside Parkway

Closeup view of building location in the lower southwest corner of the business park.

Take the 2nd left off Riverside Parkway. The frontage sign will read as “RIVERSIDE III COMMERCE CENTER”. The CDFW West Sacramento office is located at the end of this road on the left side of the road.



Figure 2: View of the frontage sign of the CDFW West Sacramento facility in the industrial business park.

Closeup view of building location in the lower southwest corner of the business park.

Drive down main road and turn left into the parking lot next to the building. Overflow parking is available at 980 Riverside and along the street in front of the building.



Figure 3: Closeup view of the location of the CDFW West Sacramento facility in the industrial business park.

Employee Parking

The facility has open employee parking spaces near and around the building designated for CDFW use. Security guards routinely monitor the parking area, but do not secure the area. CDFW assumes no responsibility for the loss of or damage to vehicles or their contents in the parking areas.

General Parking

Employee parking is allowed in all other CDFW designated parking spaces on a first-come, first-served basis. **No employee or visitor parking is allowed in places not designated as parking spots.** Overflow parking is available at the 980 Riverside location and along the street in front of the building.

Electric Vehicle (EV) Charging Stations

There are two (2) EV charging stations in front of the building available for employee use during the workday. The stations are available on a first-come, first-served basis and are to be used in four (4)-hour intervals to allow for other staff to use the stations.

The stations are not parking spaces and are to be used by employees for the time period necessary to charge vehicles. **No public or visitor use/parking is permitted.**

Approval to use the EV charging stations is requested from designated staff. Employees are responsible for the proper use of the stations.

Building Access

Visitor Access (non-CDFW)

All non-CDFW visitors must enter at the public entrance. All visitors requesting access to the building must sign in at the security desk prior to entering the building and sign out before exiting the building.

Visitors are required to provide the security guard with their name, photo identification, and the name of the CDFW employee they are meeting. The security guard will call the employee they are meeting to announce the visitor's arrival. **If the employee cannot be reached, the visitor will not be permitted to enter the building.**

Visitors will **not** be issued a security access card to access the building under any circumstances. Visitors must be escorted into and out of the building and are not allowed to remain in work areas unescorted. Visitors using meeting rooms are not to be disruptive to building operations or employees in surrounding work areas.

CDFW Visitor Access

CDFW employees who do not work in the building may be granted security access cards consistent with established procedures. These employees may access the building through employee entrances. CDFW employees who are not issued a security access card must follow the non-CDFW Visitor Access procedures to access the building.

Visitor Parking & Electric Vehicle Charging Stations

980-1010 Riverside Parkway Parking

- Employee Parking (Unreserved)
- LED Parking (Reserved)
- Secured Parking (State)
- Electric Vehicle Charging
- Bicycle Locker
- Camera
- Visitor Parking
- EV Chargers
- Car/Van Pool

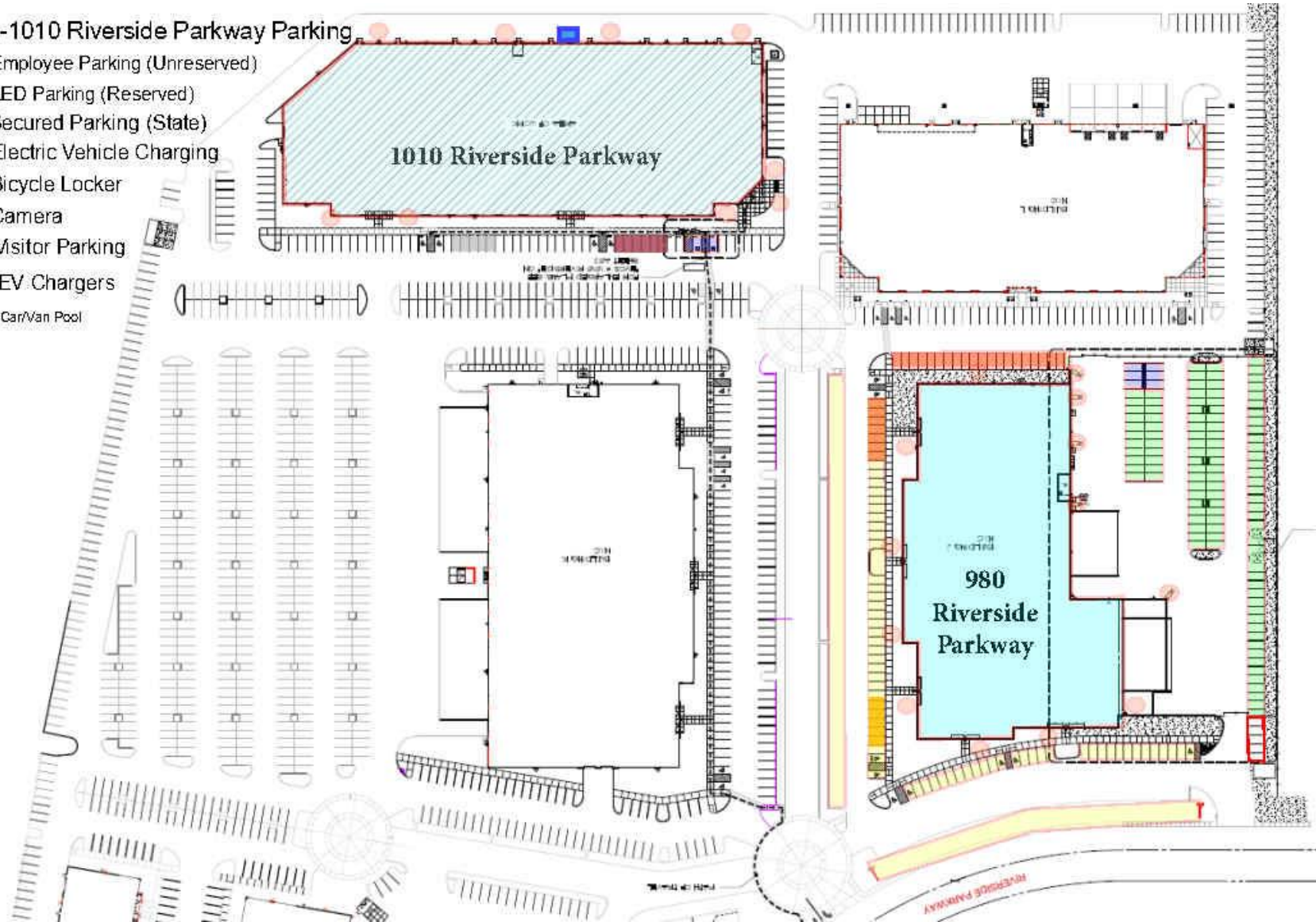


Figure 4: Diagram showing parking locations and charging stations for 1010 Riverside Parkway and 980 Riverside Parkway.

Conference Room Locations

IEP meetings at the West Sacramento facility will generally occur in one of four conference rooms depending on availability:

- California Poppy Conference Room #154, Maximum Occupancy 76
- Garibaldi Conference Room #114, Maximum Occupancy 33
- Golden Trout Conference Room #186, Maximum Occupancy 26
- Sea Otter Conference Room #102, Maximum Occupancy 25

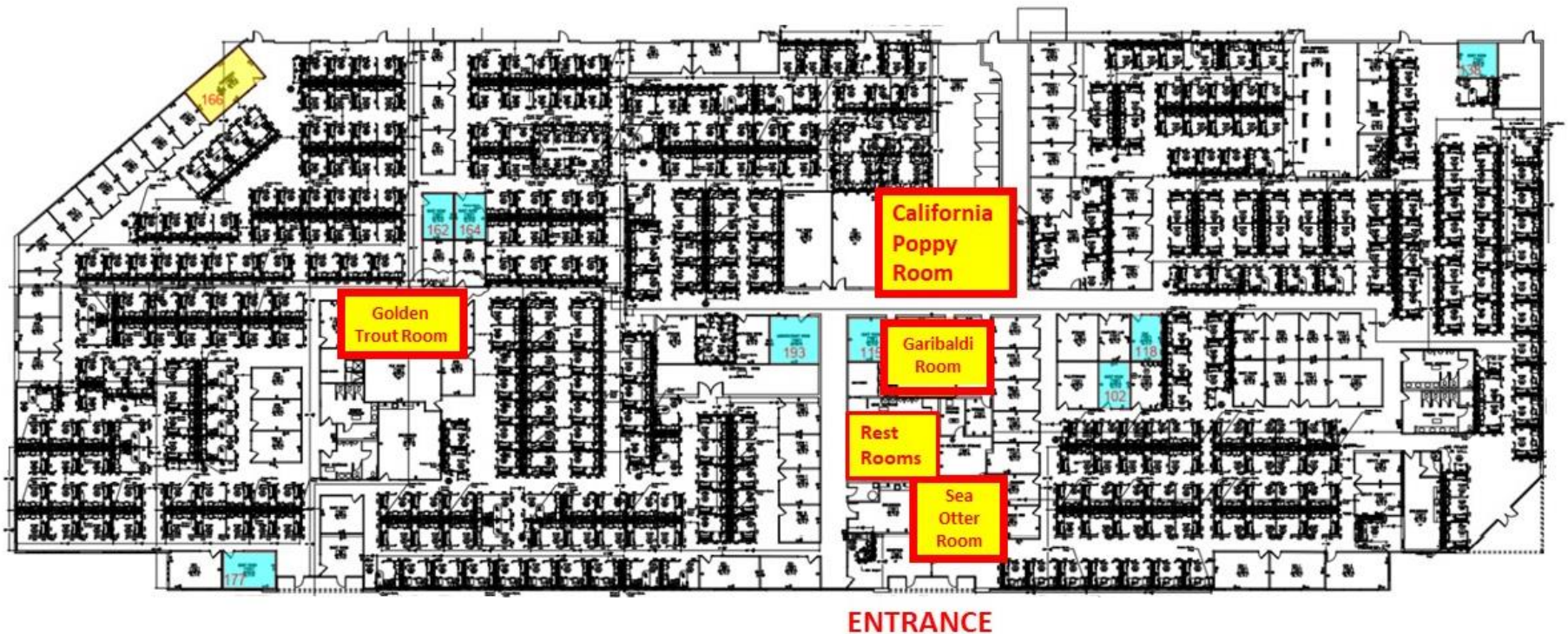


Figure 5: Conference Room Locations in 1010 Riverside Parkway.